

INTEGRATED  
DESIGN  
COMMISSION SA  
IMPROVING  
LIFE THROUGH  
DESIGN

# Whipping posts & deniability: why failure can be a sign of success

Institute of Public Administration Australia April 2012



@timhorton\_IDC



**INTEGRATED  
DESIGN  
COMMISSION SA  
IMPROVING  
LIFE THROUGH  
DESIGN**

**ROLE** Model and promote an integrated approach to design

Work across government to develop guidelines for good design policy; processes and practices based on evidence and best practice



@timhorton\_IDC



INTEGRATED  
DESIGN  
COMMISSION SA  
IMPROVING  
LIFE THROUGH  
DESIGN

COAG

*The Integrated Design Commission is a new model of urban governance and wields a broad remit in matters relating to multi-disciplinary design and the built environment.*

*The Commission works with local, State and Commonwealth governments, as well as the planning and development sector to promote a more holistic approach to design, planning and development. It also engages with the community to raise awareness of the value of good design and a more sustainable built environment*

*- COAG Reform Council*



@timhorton\_IDC





A world map with a light gray background and white outlines for continents and countries. Four locations are marked with colored dots and labeled with text. The labels are: 'Design Council CAFE// London' (green dot, top left), 'Sitra// Helsinki' (blue dot, top center), 'Singapore Design Singapore// Singapore' (blue dot, bottom right), and 'Adelaide Integrated Design Commission// Adelaide' (red dot, bottom right). The text is in a sans-serif font, with the organization name in green and the location in red.

**Design Council  
CAFE//  
London**

**Sitra//  
Helsinki**

**Singapore  
Design  
Singapore//**

**Adelaide  
Integrated  
Design  
Commission//**

**1944 identified  
design in local  
manufacturing**

**Design  
Council  
CABE//  
\_London**

**Sitra//  
\_Helsinki**

**1957 Bank of Finland  
a 'future fund' to explore  
innovation across  
economy**

**2010 joined with  
CABE to include the  
built environment**

**2003 sub committee  
of Treasury identified  
Creative industries as  
a key growth strategy**

**\_Singapore  
Design  
Singapore//**

**\_Adelaide  
Integrated  
Design  
Commission//**

**2010 Thinker in  
Residence with  
support from  
cabinet**



**“the full spectrum of innovation..with a human-centred ethos”**













**dyson**





**Gillette**



# 3 tiers

## Local Government

Adelaide City Council  
City of Prospect  
Town of Walkerville  
City of Norwood, Payneham & St Peters  
City of Burnside  
City of Unley  
City of West Torrens  
City of Charles Sturt

## State Government

Department of Planning & Local Govt  
Department of Transport, Energy & Infrastructure  
Department of Families & Communities  
Department of Premier & Cabinet

## Australian Government

Major Cities Unit  
Department of Regional Australia, Regional Development & Local Govt





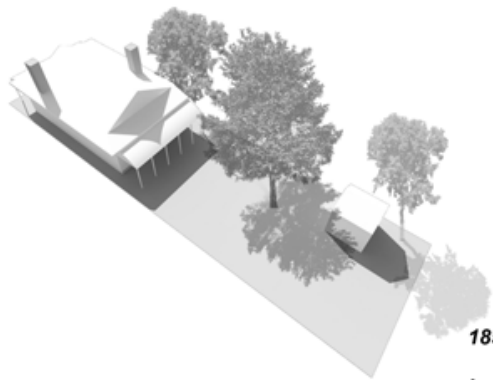
# x10

1. Human centred
2. A systems approach
3. Community engagement
4. A shared vision & guiding principles
5. Grounded in an evidence base
6. Design testing & visualisation
7. Collaborative processes
8. Utilising technology
9. Demonstration projects & exemplary procurement
10. Ongoing monitoring & measurement



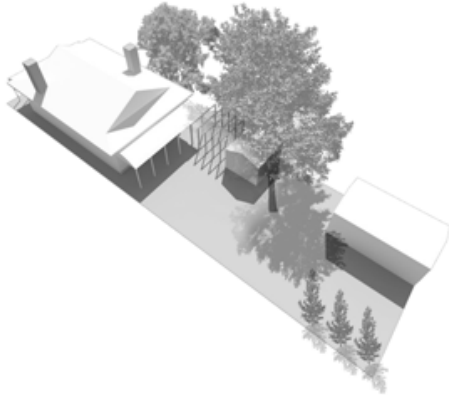


# Character areas



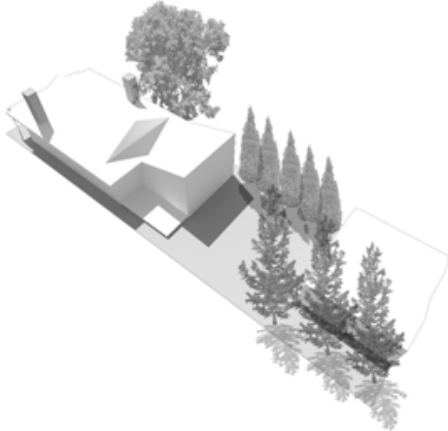
1850-1889

*laneway is used to service the outhouse. The backyard itself ranges from the ornamental to the forgotten*



1890-1950

*The growing density of cities revive the backyards to become places that come to define the home, from the vegie patch and the hills hoist to the handymans shed*



1951-1990

*The post-war backyard became an extension to the modest house. It gave definition to the 'Australian dream'. The laneway though becomes a service corridor for the growing car population*



# Design Testing



**Character areas + Ageing in place =**



**Design  
Testing**



**In-home formal and informal care: \$11,370**  
per person per year

**Residential aged care: \$48,710**  
per person per year

Bridge, C., Cooper, B., Kendig, H., Phibbs, P., 'The costs and benefits of using private housing as the home base for care for older people: Secondary data analysis'. Australian Housing and Urban Research Institute, No. 115, 2008, p34



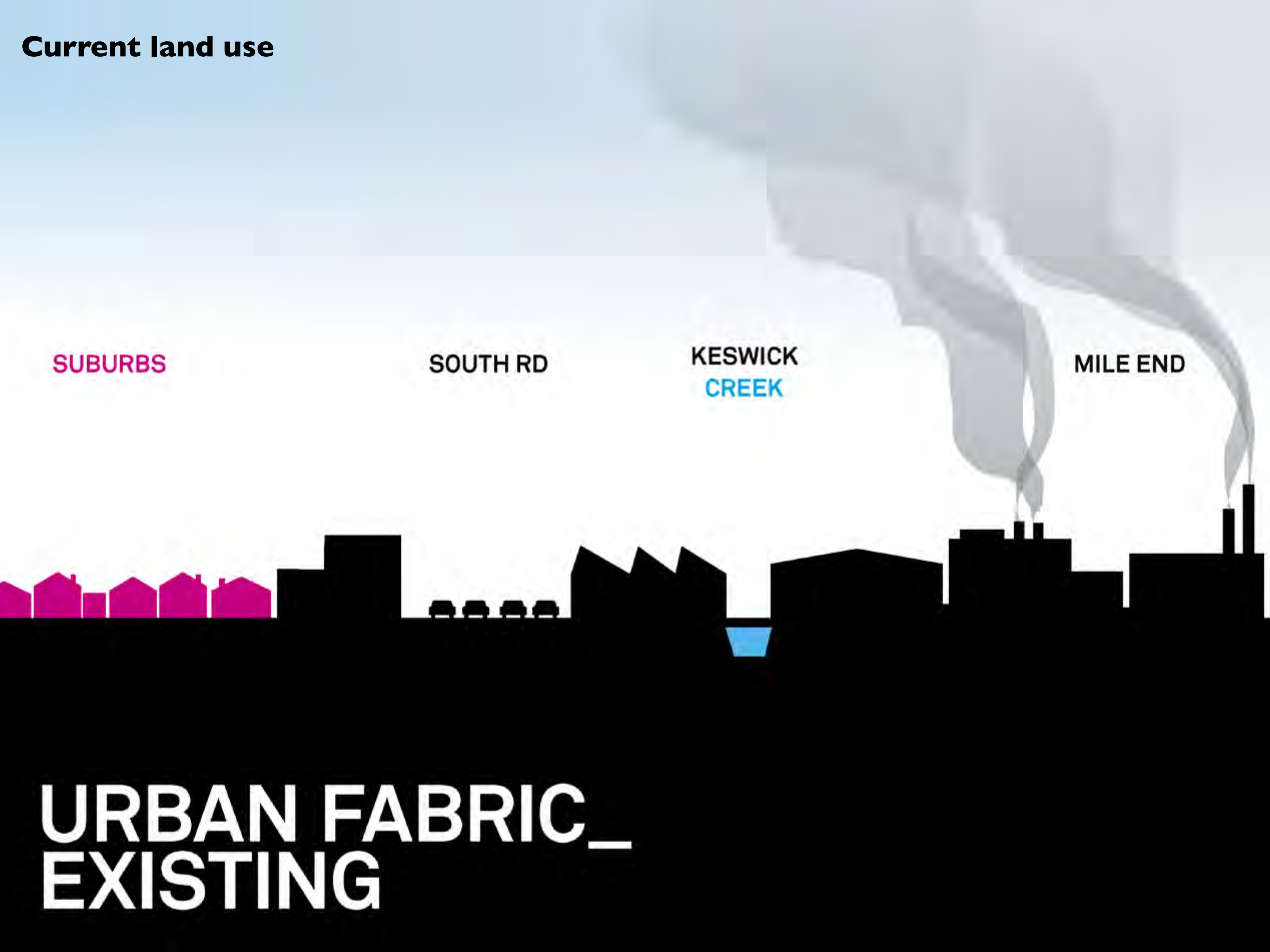
**Character areas + Ageing in place = diverse, affordable housing**



***Design  
Testing***



## Current land use



SUBURBS

SOUTH RD

KESWICK  
CREEK

MILE END

URBAN FABRIC\_  
EXISTING



**Current land use + future transport infrastructure thinking =**

SUBURBS

SOUTH RD

KESWICK  
CREEK

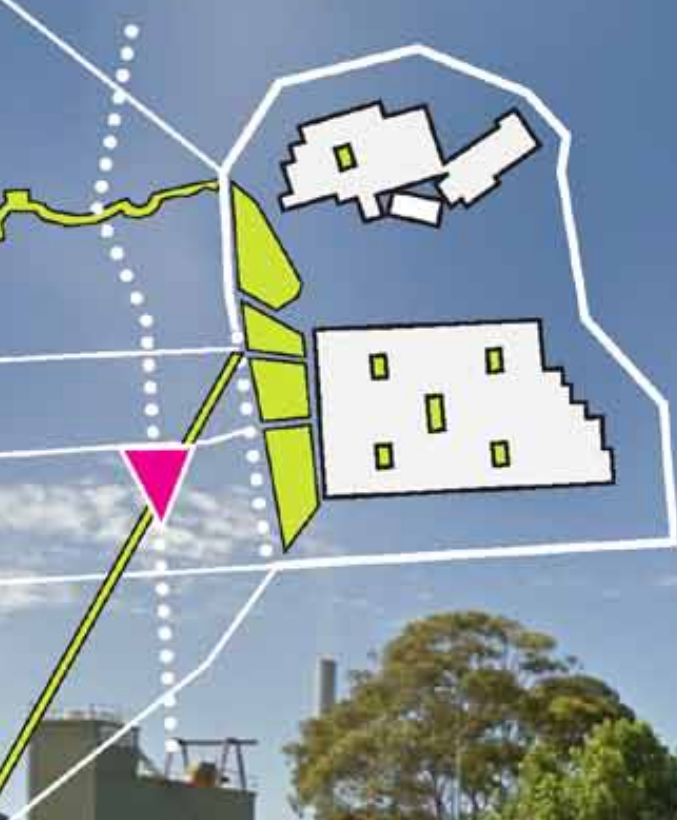
MILE END



**URBAN FABRIC\_  
PROPOSED**



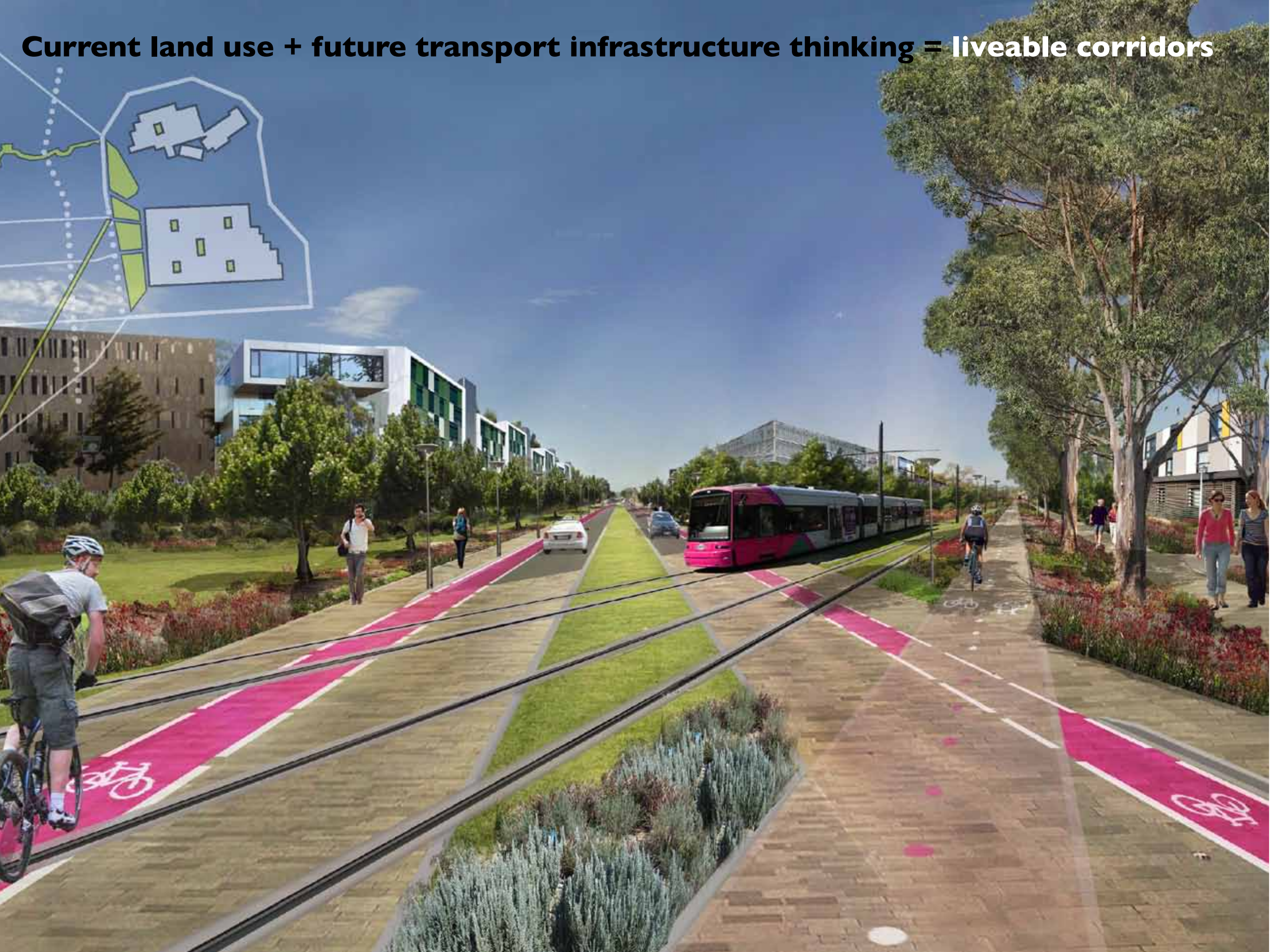
**Current land use + future transport infrastructure thinking =**



**SOUTH ROAD\_**  
**EXISTING**



**Current land use + future transport infrastructure thinking = liveable corridors**





INTEGRATED  
DESIGN  
COMMISSION<sup>SA</sup>  
IMPROVING  
LIFE THROUGH  
DESIGN

# DesignLAB v1.0

## Safety in the City

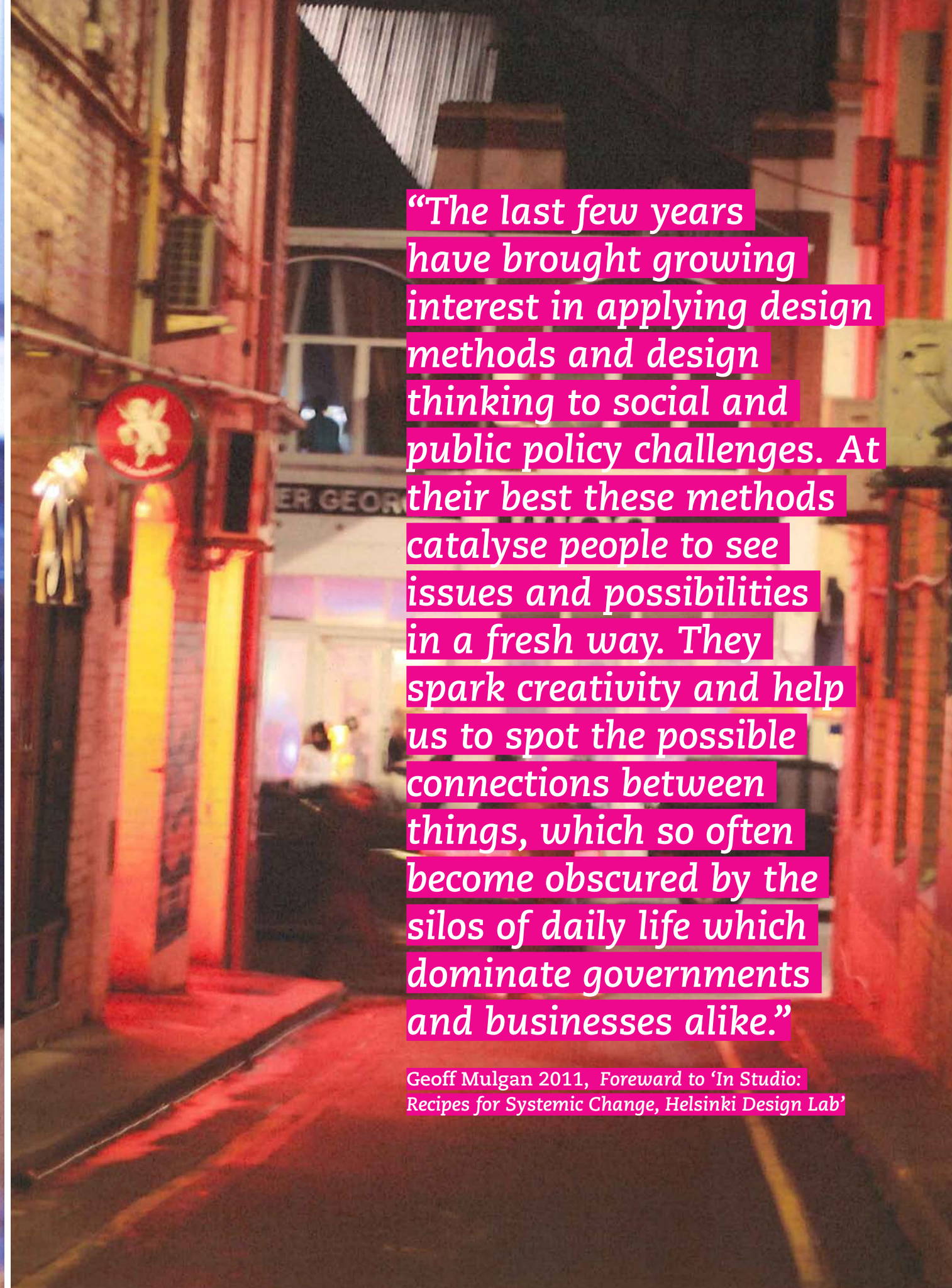
**5000+**  
YOUR IDEAS FOR A GREAT CITY

5000+ an integrated design strategy for inner Adelaide is supported by the Department of Regional Australia, Regional Development & Local Government and is a joint initiative of the South Australian Government and the Adelaide City Council, in association with the seven councils adjoining Adelaide.



Government  
of South Australia





“The last few years have brought growing interest in applying design methods and design thinking to social and public policy challenges. At their best these methods catalyse people to see issues and possibilities in a fresh way. They spark creativity and help us to spot the possible connections between things, which so often become obscured by the silos of daily life which dominate governments and businesses alike.”

Geoff Mulgan 2011, Foreward to 'In Studio: Recipes for Systemic Change, Helsinki Design Lab'





- 1 **Christie Anthoney**  
Creative Director, TAFE Adelaide  
College of the Arts.
- 2 **Matt Davis**  
Design Leader, 5000+  
Integrated Design Commission
- 3 **Andrew Wallace**  
President, Adelaide West End  
Association. LecturerUniSA
- 4 **Dr Ianto Ware**  
Renew Adelaide  
Co-founder Format Festival and  
Format Collective
- 5 **Jennifer West**  
Senior Safety Strategy Consultant,  
Adelaide City Council
- 6 **Warwick Keates**  
Director WAX Design  
DesignLAB facilitator

### DesignLAB program

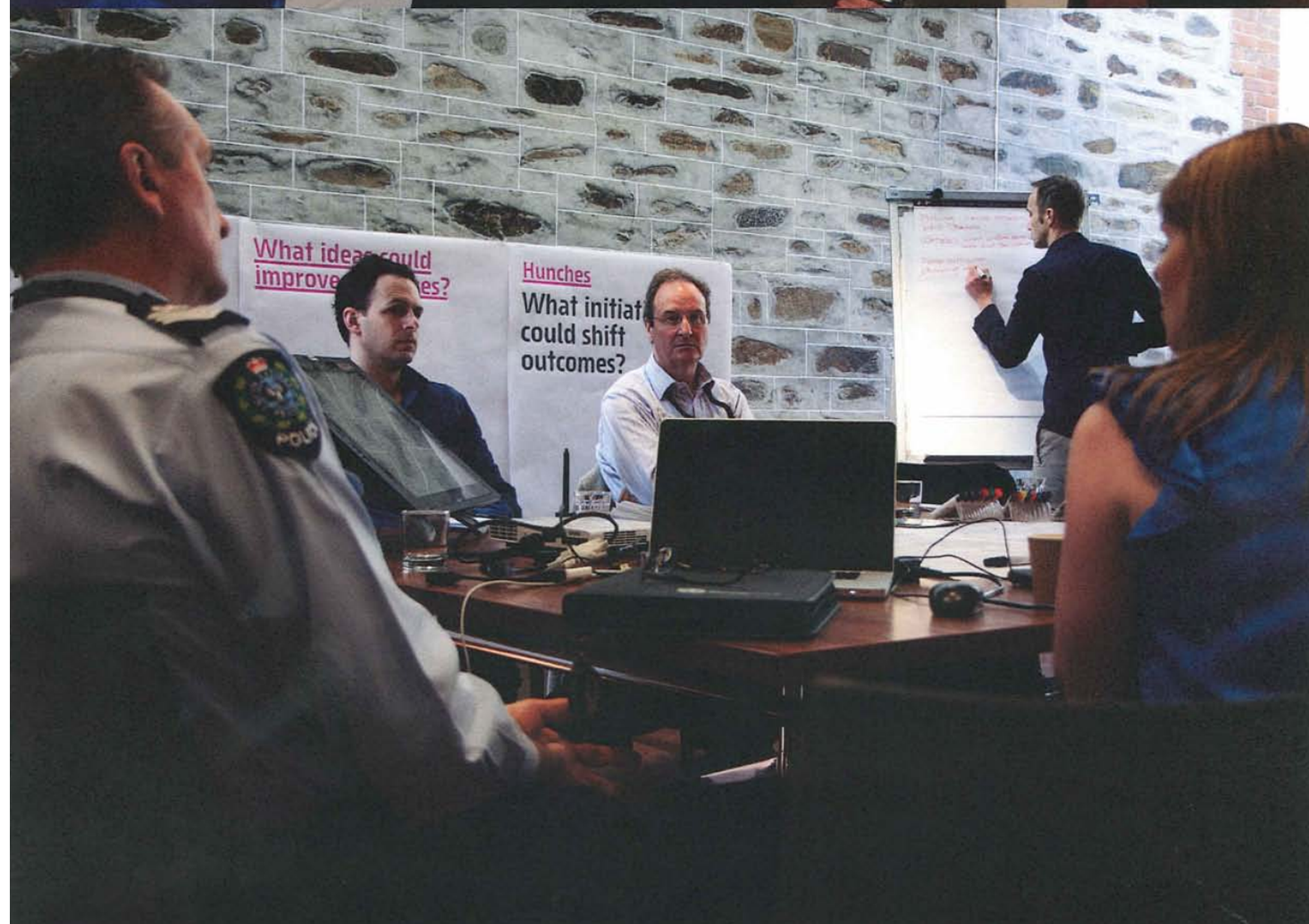
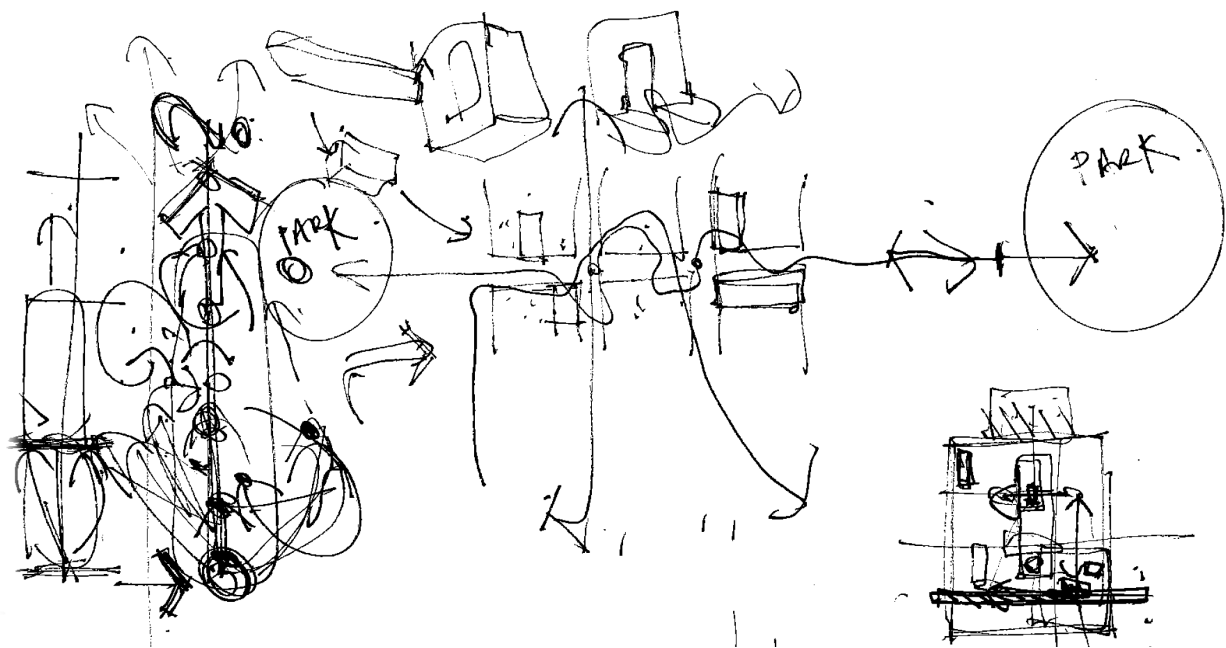
9:00	Introductions
9:15	Session 1: Methodology and Approach. The DesignLAB challenge
9:30	Session 2: Look & Listen. Site visit and stakeholder conversations
11:00	Session 3: Expert Briefings [SA Police, Drug & Alcohol Services SA]
12:00	Session 4: Positive Defiance: Extreme propositions
3:00	Session 5: Identifying the 'hunches'
4:30	Presentation to Vibrant City forum.

Understanding the  
architecture of the problem:  
- is it 'city safety'?

or  
- a 'vibrant night time  
economy'?

or both?

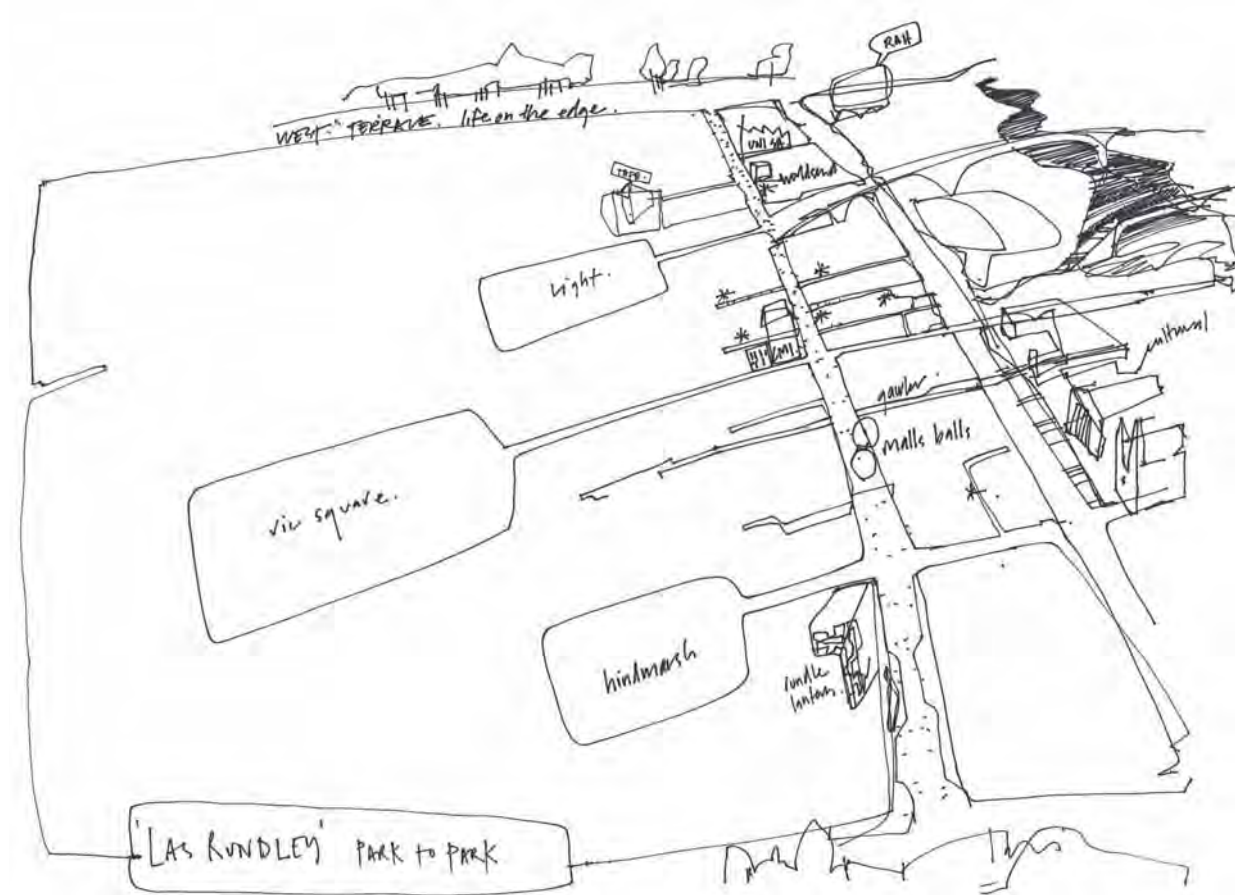






# Identifying the 'hunches'

**A hunch is not a solution. It is more of a beginning than an end. The following six hunches are thought to have transformational potential but require further investigation.**

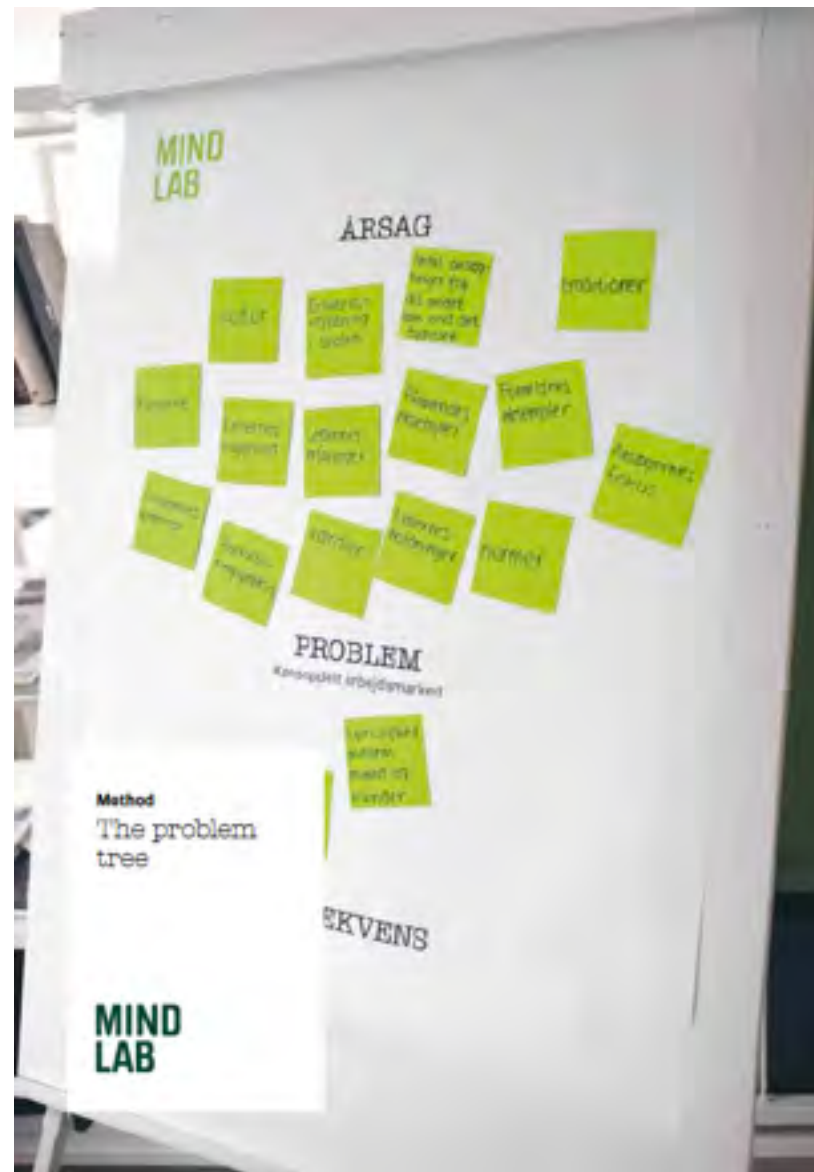


- 1. A 'Vibrancy Enabler'**  
Vibrancy needs things to happen. It needs people to say yes. It sometimes needs encouragement. The Vibrancy Enabler is a person charged with connecting disparate people and shepherding things through where they might otherwise be lost in the system.
- 2. The landlords need love**  
There are a number of key property owners in the precinct. Some demonstrate care for the quality of their buildings and quality of the tenants. Others don't. Engaging, connecting, empowering and valuing the owners and operators is key to building a collective aspiration for the area. The key players of the West End and beyond should be invited to form an 'alliance of distinguished owners'.
- 3. Match the Bus to the Booze**  
Getting people home after a big night out is crucial. Presently the 'after midnight' public transport is approximately hourly and only on Saturday nights. Could a GO ZONE, with buses every 15 minutes be used to get people out of the area in a quick and orderly fashion key times, serving as an incentive for people to catch it while they can.
- 4. Incentivise 'transition traders'**  
There are presently distinct day and night economies. Entertainment at night, and a mix of arts, retail, and convenience stores during the day. The contrast is strong and neither offers much to the other. All properties should consider their role in activating the streets outside of their core hours. Consideration should be given to how the distinct activities might better transition, in particular in the afternoon / evening. Can a new evening economy be developed around diverse café's, food, live music, small bars, performance, start-ups, grass roots, temporary use, curated retail?
- 5. Liquor Licensing: Easy come, easy go.**  
To build the diversity of small bars – not the 'booze barns' – it should be easy for start-ups to get a limited liquor license for a small venue. It should be equally easy to lose it if the operator doesn't fulfil their responsibilities, including the quality of their 'offer', the behaviour, noise management, responsible serving of alcohol etc. Conditions can be tight to stop 'morphing' of a licensed venue into something 'undesirable'.
- 6. Think big: 'Las Rundle'**  
Hindley Street is stigmatised. So much folklore and bad press surrounds the precinct that the negative perceptions will be hard to shift. Hindley Street needs to be welcomed back into a bigger vision for the City. 'Las Rundle' – the connection of Rundle Street and Hindley Street into a mile-long promenade from Park Land to Park Land connects the disparate precincts into a cohesive space – connected, coordinated, but full of diverse pockets of character and distinct flavour. Las Rundle doesn't mean a big Rundle Mall, but it recognises that the fortunes and failures of one piece of the city is linked to that of another.





Scoping/designing  
the project



Understand the  
'architecture of the  
problem'

# Danish Mind LAB

<http://www.mind-lab.dk/en>





Scoping/designing  
the project

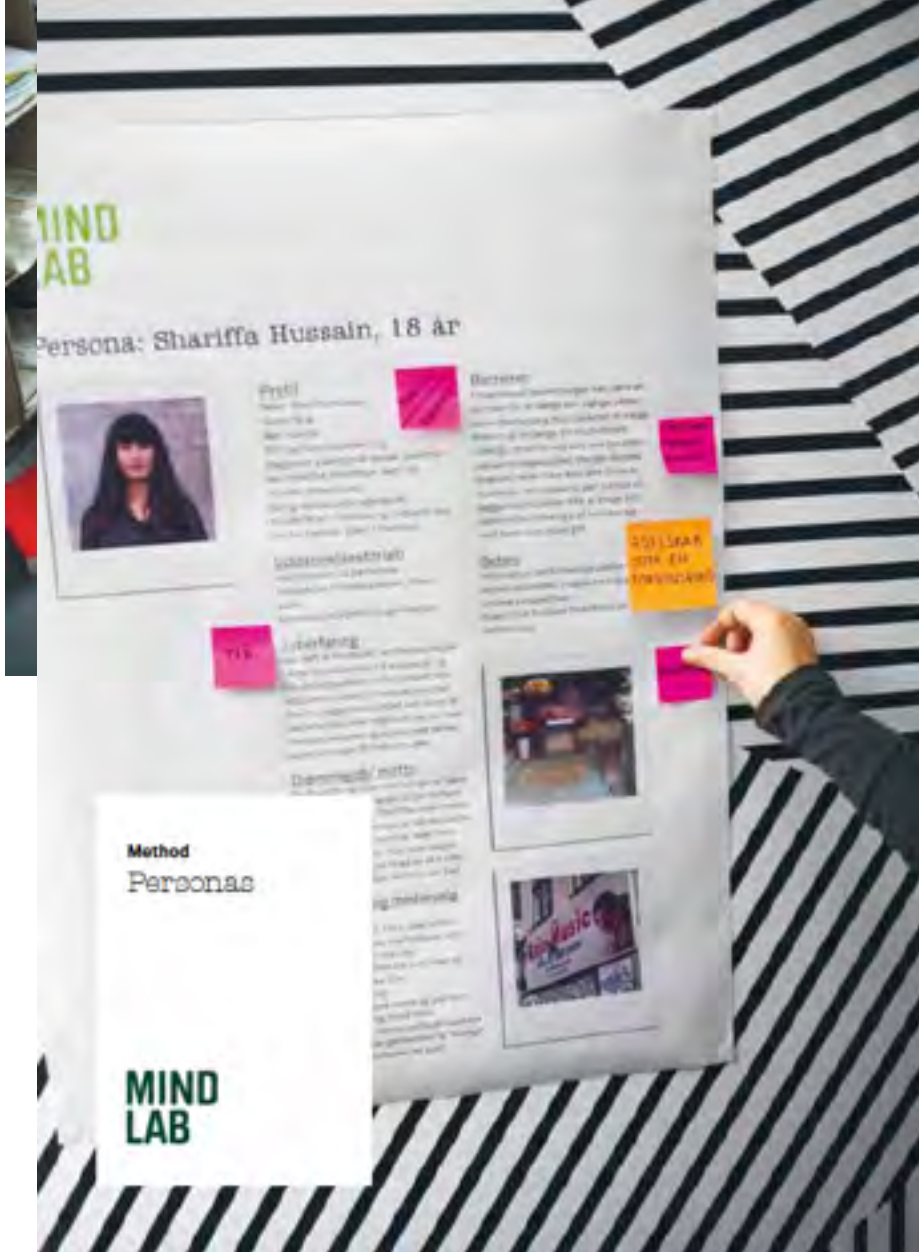
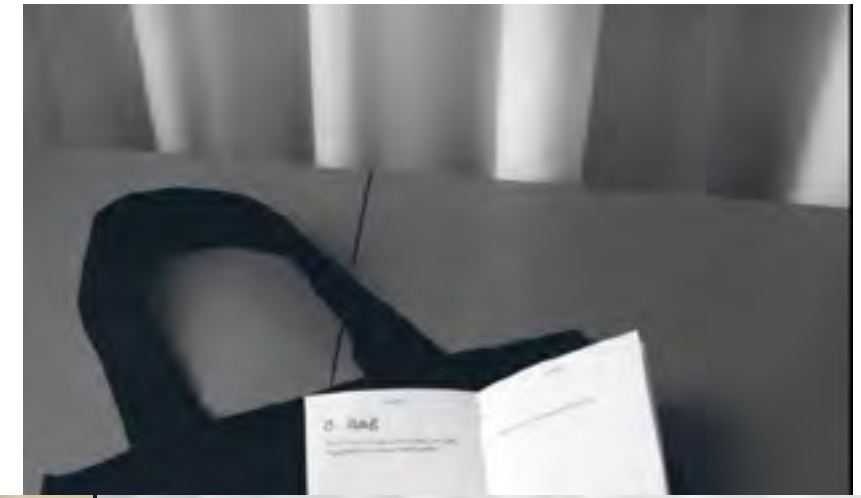
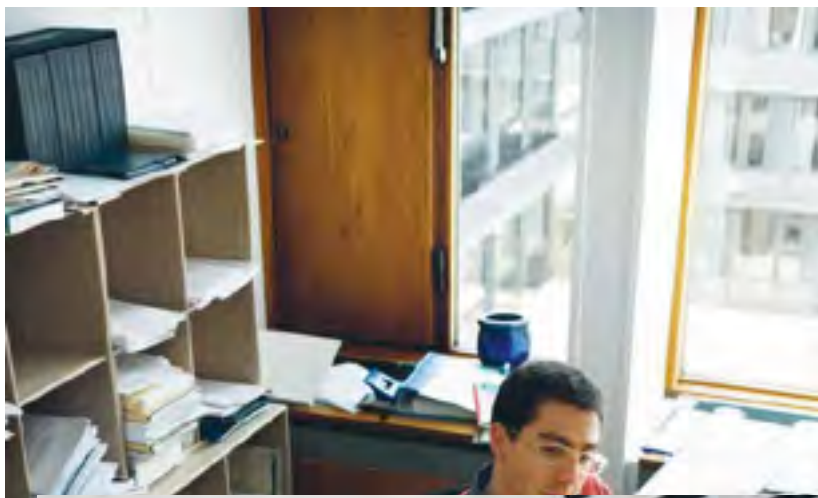


Put people at the  
centre



Observe/interview/  
understand





Give the problem a human face

Be brave in problem solving

Prototype



# 1. Whipping posts & deniability





**2. Space and attitude  
to turn 'on' not 'up'.**





*Ability to change community attitudes by discussion and consultation.*

INSIGHT: Planning can be progressive, environmentally sustainable - but approach to planning must be changed from bottom-up.

Vertical stacking!  
Why aren't we doing this?

*That people are interested in the future of our living space.*

Making areas more people friendly, with concentration of green belts along with the high density.

Removing access barriers.  
Potential for better public transport and utilization.

# 3. Not about what 'is' or 'should'. But 'could?'...

**5000+**  
ADELAIDE: LIVEABLE CITY

5000+ an Integrated Design Strategy for inner Adelaide is supported by the Department of Regional Australia, Regional Development and Local Government and is a joint initiative of the South Australian Government and the Adelaide City Council, in association with the seven councils adjoining Adelaide.

March 2012



Government of South Australia

**West Torrens Community Workshop**  
**'What insight will you take home with you today?'**

Comments in response to Patterns of Living projects.  
Saturday 25 February 2012