

Our Strategic Vision



RB RIVERBANK
PRECINCT




RenewalSA
people partnerships progress





ANDREW McEVoy

FOREWORD

From the time of the first Australians through to today, the River Torrens and all that lies on its banks have played a significant role. In particular, the section of the river that frames the northern edge of the city – the Riverbank Precinct – has long been considered Adelaide’s spiritual heart and is integral to its social, cultural and economic identity.

In terms of size, the Riverbank Precinct – from Hackney to Bowden – is larger than Southbank in Melbourne, Southbank Brisbane, Circular Quay or Darling Harbour in Sydney. It is home to much of the best of Adelaide, including the Botanic Gardens, Adelaide Zoo, Adelaide Oval, Adelaide Convention Centre and Adelaide Festival Centre. It is also home to some of our universities, the Art Gallery of South Australia, the South Australian Museum and the Adelaide Park Lands.

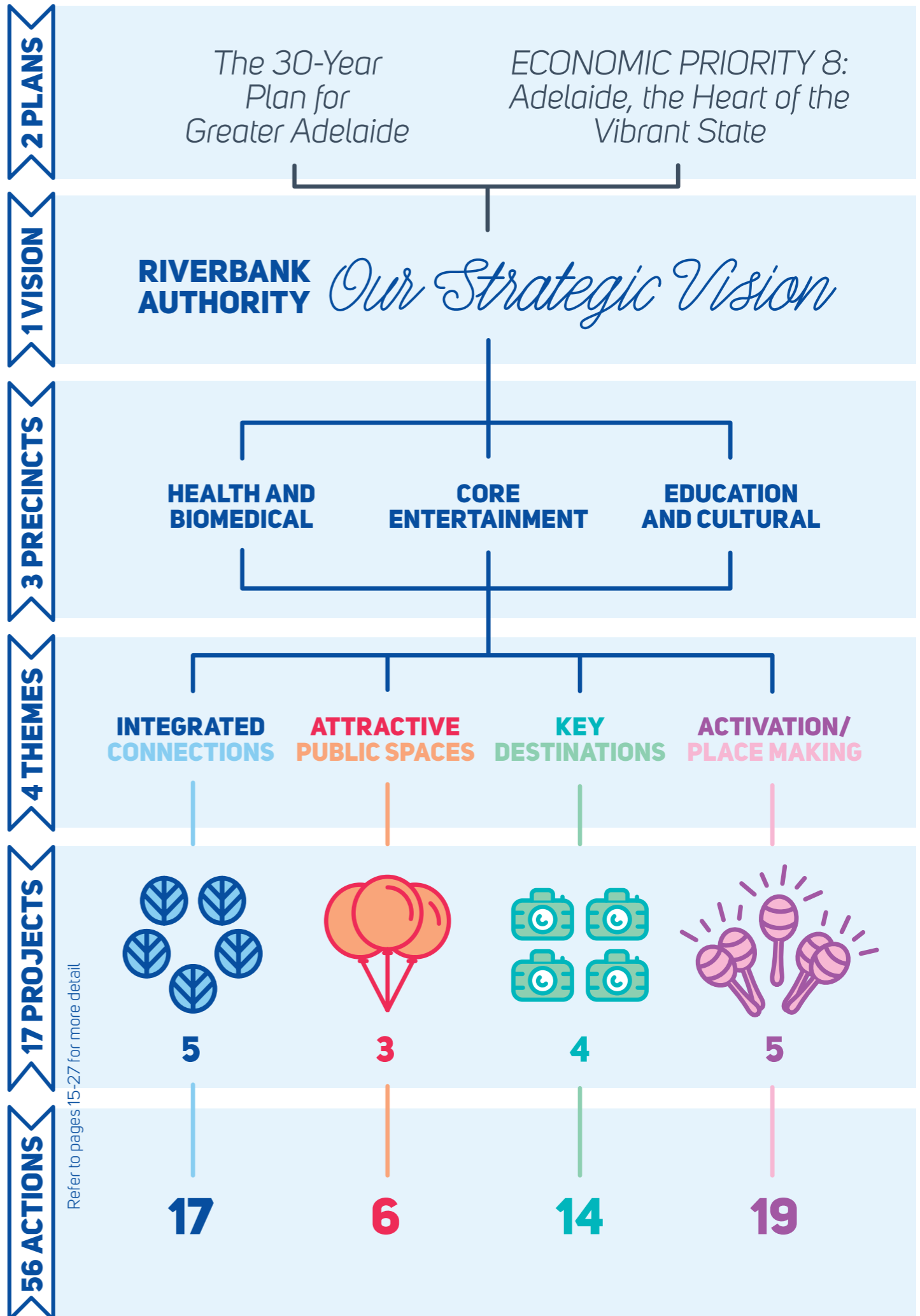
It is also the scene of in excess of \$4.7 billion worth of public and private infrastructure investment – much of which is complete or under construction and some of which is still to come.

Despite this, we have been unable to fully capitalise on the potential of the Riverbank. For too long development and land use in the precinct has been fragmented and poorly coordinated. There is opportunity to improve the variety of hospitality and retail offerings, improve buildings that have turned their back on the water and to become more consistent in the delivery of high quality, connected public spaces to and through the precinct.

Unlocking the potential of the Riverbank and re-establishing it as Adelaide’s premier biomedical, entertainment, cultural and educational precinct has been foremost in the mind of the Riverbank Authority since it was formed last October.

Our role is to advise Cabinet on new development that is consistent, connected and of the highest possible quality – including public areas for South Australians and visitors to enjoy in what is one of the world’s ultimate lifestyle cities. Key to this will be the delivery of the new-look Festival Plaza – a central component of the revitalisation.

The Board also believes a revitalised Riverbank Precinct will deliver a significant boost to the state’s economy, through construction jobs, increased tourism, further commercial investment and ongoing employment opportunities. The overwhelming success of the Adelaide Oval development is proof of how revitalised public infrastructure generates economic growth and confidence.



ADELAIDE'S SOURCE OF LIFE



RIVERBANK AUTHORITY VISION STATEMENT

This plan outlines how we will revitalise the Riverbank Precinct which is at the heart of our vibrant city.

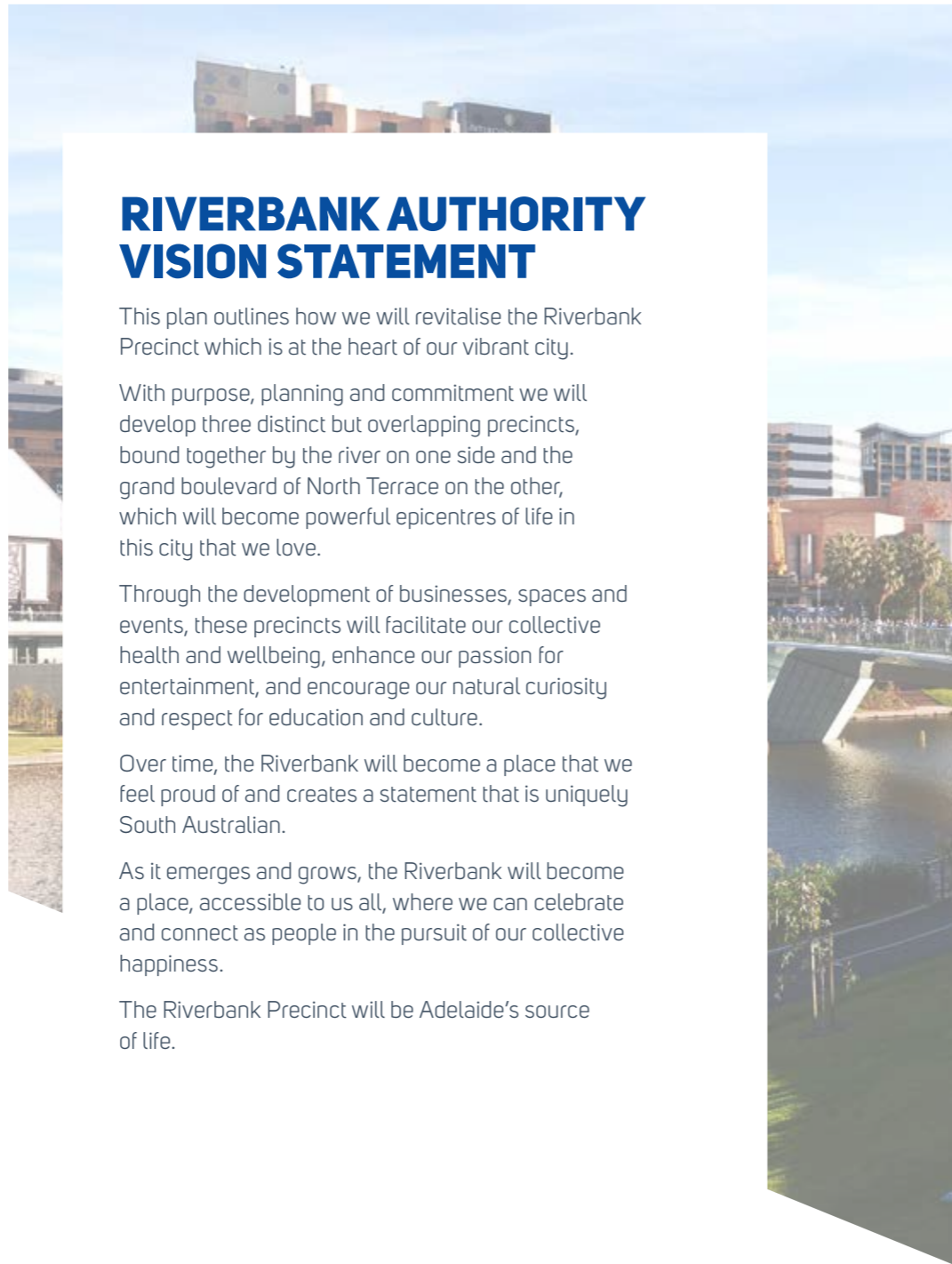
With purpose, planning and commitment we will develop three distinct but overlapping precincts, bound together by the river on one side and the grand boulevard of North Terrace on the other, which will become powerful epicentres of life in this city that we love.

Through the development of businesses, spaces and events, these precincts will facilitate our collective health and wellbeing, enhance our passion for entertainment, and encourage our natural curiosity and respect for education and culture.

Over time, the Riverbank will become a place that we feel proud of and creates a statement that is uniquely South Australian.

As it emerges and grows, the Riverbank will become a place, accessible to us all, where we can celebrate and connect as people in the pursuit of our collective happiness.

The Riverbank Precinct will be Adelaide's source of life.





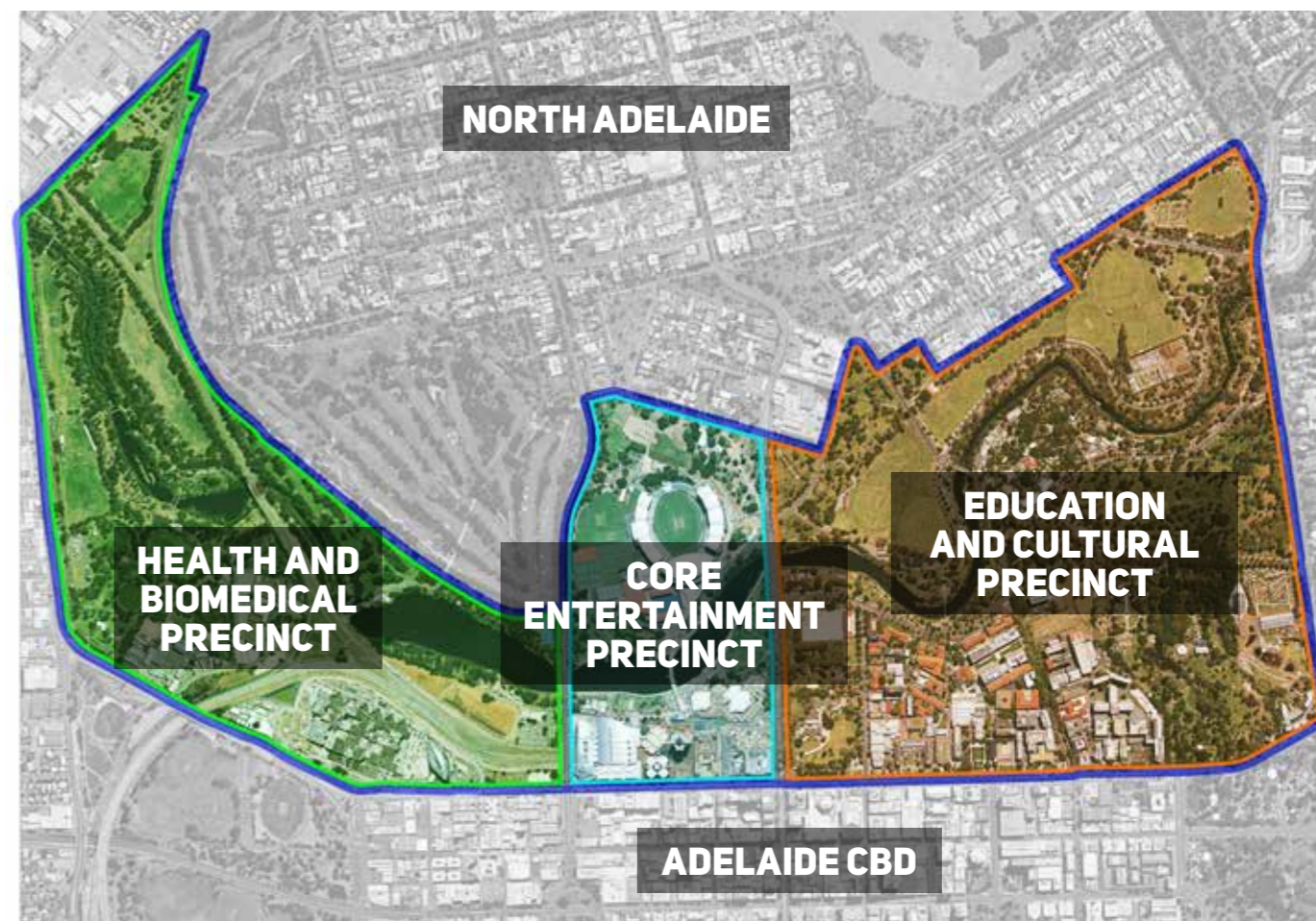
THE RIVERBANK PRECINCT

The Riverbank Precinct is undoubtedly one of South Australia's most important and recognisable public places in terms of its social, economic and cultural value to the state. Beautiful riverfront parklands adjoin the centre of the city, providing places for recreation, learning, entertainment and culture.

Encompassing 380 hectares of land around the River Torrens, from Gilberton in the east through to Bonython Park and Bowden in the north west, the precinct is home to many of Adelaide's most significant buildings and spaces, including:

- Botanic Gardens and Park;
- current Royal Adelaide Hospital;
- University of Adelaide;
- University of South Australia (City East);
- Art Gallery of South Australia;
- South Australian Museum;
- State Library;
- Migration Museum;
- Government House;
- Parliament House;
- Adelaide Zoo;
- Adelaide Casino;
- Torrens Parade Grounds;
- Adelaide Festival Centre;
- National Wine Centre of Australia;
- Adelaide Railway Station;
- Adelaide Oval;
- Intercontinental Hotel;
- Adelaide Convention Centre;
- South Australian Health and Medical Research Institute (SAHMRI);
- new Royal Adelaide Hospital;
- Old Adelaide Gaol; and
- Bonython Park.

These physical and natural landmarks have been used to identify three distinct but overlapping precincts along the Riverbank – the Health and Biomedical Precinct in the west, the Core Entertainment Precinct and the Cultural and Educational Precinct in the east. Each of these precincts represent a different opportunity for continued economic development within and adjacent to the Riverbank and are focused on commercial, entertainment, cultural, research, education and tourism activities dependent on their location and existing or proposed future uses.



A REVITALISED AND ACTIVATED RIVERBANK PRECINCT IS VITAL TO THE FUTURE GROWTH AND SUCCESS OF SOUTH AUSTRALIA



THE RIVERBANK AUTHORITY

In 2014, the Government of South Australia appointed the Riverbank Authority (the Authority) – a statutory body to oversee the facilitation of events, coordination of development and overall promotion of the Riverbank Precinct. Served by board members Andrew McEvoy (Chair), Malcolm Snow, Karyn Kent, Professor Tanya Monro and John Hanlon (Chief Executive of Renewal SA), the Authority is responsible for:

- Advising and making recommendations to the state government, Cabinet and the Premier with respect to major developments and the strategic direction of the precinct.
- Acting as the referral Authority for proposals in the Riverbank Precinct (to ensure consistency).
- Coordinating events and activities (including construction) within the precinct.
- Advising and making recommendations regarding licenses and concessions.

Further to this, a core component of the Authority's early work has been to establish a strong and clear vision for the future of the precinct. In developing this strategic vision, which focuses on the next five years of development in the precinct, the Authority has used *The Riverbank Plan*, a document produced by Woods Bagot on behalf of Renewal SA in 2013, as the basis for identifying the program of works required to turn it into a reality for all South Australians.

The Authority recognises this vision cannot be achieved in isolation and as such is committed to ongoing engagement with key Precinct Partners within the Riverbank Precinct, the Adelaide City Council and government agencies.

We are also committed to forming a close working relationship with the community who has significant interest within the precinct, to ensure the vision is both shared and realised.

INVESTMENT IN THE RIVERBANK

Given its value to the state, the future direction of the Riverbank Precinct has long been the focus of much public and private debate. It has also been the beneficiary of significant public and private investment, with more than \$3.8 billion of infrastructure constructed in the precinct over the past five years including:

- \$535 million to redevelop Adelaide Oval
- \$350 million to expand Adelaide Convention Centre (two stages)
- \$200 million to construct the new South Australian Health and Medical Research Institute (SAHMRI)
- \$40 million to construct the Riverbank Footbridge over the River Torrens
- \$2.7 billion to construct the new Royal Adelaide Hospital (new RAH)

This significant spend has triggered a new level of private investment in the Riverbank, including:

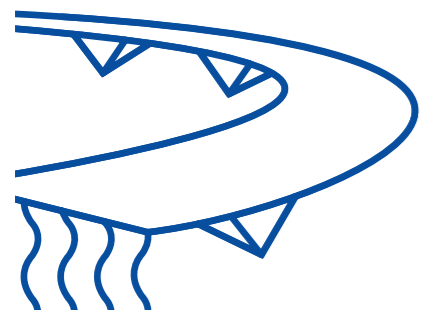
- › \$430 million by the Walker Corporation to redevelop the Adelaide Festival Centre Car Park and Plaza (with an additional \$180 million from the state government) and construct a commercial building
- › \$206 million by the University of Adelaide to construct its Medical and Nursing School building, and
- › \$100 million by the University of South Australia to construct its Centre for Cancer Biology building.

Further to this, additional investment of almost \$1 billion is still pending approval.

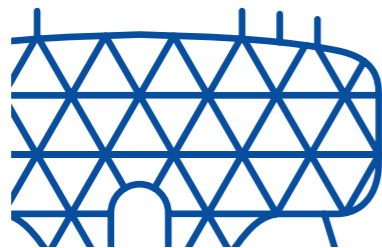


An opportunity now exists to build upon the momentum generated by this significant investment by creating new attractions and facilities in the precinct to transform this special part of our city into year-round destination of choice for locals and visitors alike.

A revitalised and activated Riverbank is seen as vital to the future growth and success of South Australia as it will form the cornerstone upon which Adelaide can achieve its vision of becoming a distinctive, liveable and attractive city.



\$40 MILLION
RIVERBANK
FOOTBRIDGE



\$200 MILLION
SOUTH
AUSTRALIA
HEALTH &
MEDICAL
RESEARCH
INSTITUTE



\$350 MILLION
EXPAND
CONVENTION
CENTRE



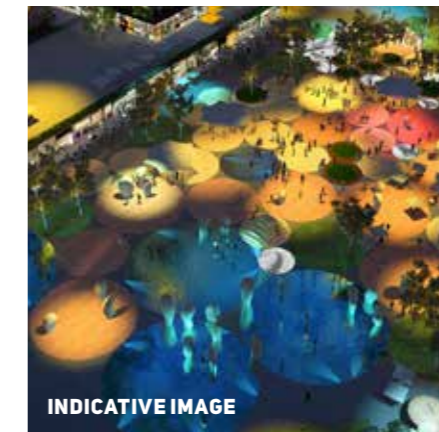
\$535 MILLION
REDEVELOP
ADELAIDE OVAL



\$610 MILLION
FESTIVAL CENTRE
CAR PARK AND
PLAZA



\$2.7 BILLION
NEW ROYAL
ADELAIDE
HOSPITAL



INDICATIVE IMAGE



CBD

MUSEUM & ART GALLERY

ADELAIDE UNI



STATE LIBRARY

BOTANIC GARDENS



ADELAIDE ZOO



ADELAIDE FESTIVAL CENTRE



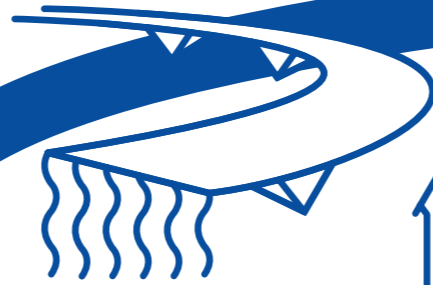
ELDER PARK



ADELAIDE CONVENTION CENTRE

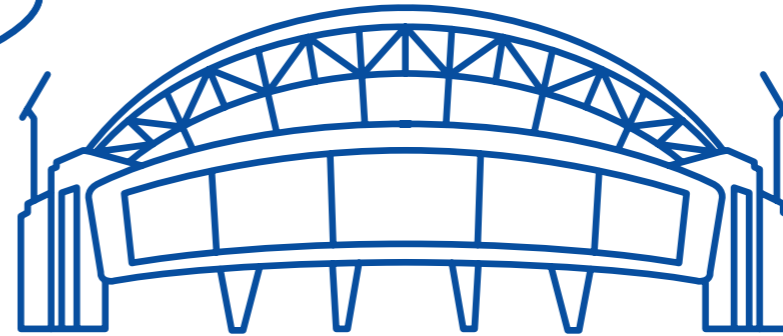


CASINO

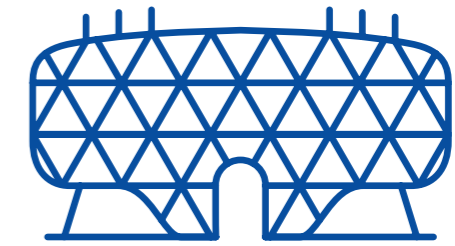


RIVERBANK FOOTBRIDGE

UNIVERSITY BUILDINGS



ADELAIDE OVAL



SAHMRI

new RAH

ADELAIDE PARK LANDS



NORTH ADELAIDE

FOUR KEY THEMES

In establishing its vision, the Riverbank Authority has identified four core areas of focus for the Riverbank Precinct that are crucial to the successful delivery of the outcomes it wishes to achieve. These areas are:

1. INTEGRATED CONNECTIONS

Integrated connections linking visitors, pedestrians and cyclists to and through the precinct, by improving accessibility and movability for all.

2. ATTRACTIVE PUBLIC SPACES

A consistent and high standard of attractive public spaces throughout the precinct to ensure visitors' experience of the area is optimised and that the significant investment in the space is enhanced.

3. KEY DESTINATIONS

To make a feature of the key destinations, including new major projects and existing buildings, to drive economic growth and positively transform the way the Riverbank Precinct is used and perceived.

4. ACTIVATION/ PLACE MAKING

To establish the Riverbank Precinct as the 'go to' destination in Adelaide, through the delivery of a funded and coordinated program of activation and place making leveraging off of existing investment and activities (e.g. Adelaide Oval events) to ensure there is always something happening down by the River Torrens.

PROJECTS

It is the Authority's intent to revise the program every 12 months to ensure it is dynamic and evolves as the precinct matures, with individual project priorities more accurately reflecting economic and other considerations. This will assist the Authority in prioritising its and the government's actions over the coming decade and beyond.

INTEGRATED CONNECTIONS



RIVER PATH

The River Path will engage visitors through the establishment of an enhanced pathway that connects both sides of the river. By creating a more direct and active river path that links existing and future destinations,

people will be more inclined to explore the river in its entirety. The character of the River Path will be green and lively and will engage the water's edge. The path will consist of a walking path and bicycle lane and the paths will be clearly marked to allow for ease of pedestrian movement.



ACTION

MINOR INFRASTRUCTURE UPGRADES TO IMPROVE THE PEDESTRIAN AND VISITOR EXPERIENCE ALONG THE PATHWAYS ON THE NORTH AND SOUTH OF THE RIVER TORRENS LINKING JOLLEY'S BOATHOUSE AND THE TORRENS WEIR

PHASE

DELIVERY

WHEN

JULY 2016

ESTABLISH A SHARED PATHWAYS / CONNECTIONS MASTER PLAN TO IDENTIFY STAGES FOR DELIVERY OF THE RIVER PATH AND THE CENTRAL PATH

DELIVERY

JULY 2016

STAGE 1 OF THE RIVER PATH

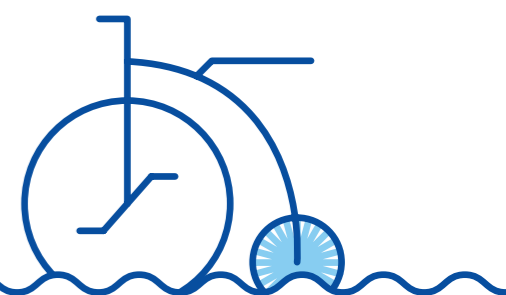
PLANNING

2016-2017

CENTRAL PATH

The Central Path is a new path parallel to and between the river and North Terrace linking the Botanic Gardens and University of Adelaide to the Core Entertainment Precinct along the

Riverbank Promenade, the new Royal Adelaide Hospital and the proposed revitalisation of Bonython Park. The character of the Central Path will be one of meandering. This path will be organic and transition as it moves through the various spaces.



ACTION

ESTABLISH A SHARED PATHWAYS / CONNECTIONS MASTER PLAN TO IDENTIFY STAGES FOR DELIVERY OF THE RIVER PATH AND THE CENTRAL PATH

PHASE

DELIVERY

WHEN

JULY 2016

A VISION FOR LINKING THE HEALTH AND BIOMEDICAL PRECINCT BACK TO THE ENTERTAINMENT SPACES ALONG THE RIVERBANK

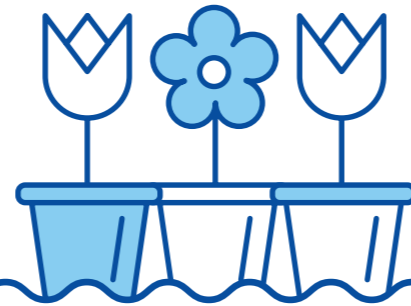
PLANNING / INVESTIGATION

2016-2017

NORTH TERRACE

The revitalisation of North Terrace as a major boulevard will extend the high quality public realm that has enhanced the cultural precinct between King William Street and Pulteney Street

along North Terrace, to both Hackney Road and Port Road. With its 'grand boulevard' character, the path will act as an entrance statement for the precinct from the CBD. It will also serve as a crucial link back to the residential, educational and commercial precincts bordering the Riverbank.



ACTION

ESTABLISH A MASTER PLAN FOR NORTH TERRACE FROM KING WILLIAM STREET TO THE NEW ROYAL ADELAIDE HOSPITAL

PHASE

PLANNING

WHEN

DECEMBER 2015

STAGE 1 OF THE NORTH TERRACE MASTER PLAN

DELIVERY

2016-2017

ESTABLISH A SHARED USE BOULEVARD ALONG THE EASTERN SIDE OF PORT ROAD CREATING A NEW ROUTE INTO THE CITY FROM THE SURROUNDING RESIDENTIAL AND COMMERCIAL AREAS

PLANNING

2019-2020

ESTABLISH A MASTER PLAN FOR EXTENDING THE NORTH TERRACE BOULEVARD EAST FROM FROME ROAD TO THE ROYAL ADELAIDE SITE AND THE BOTANIC GARDENS

PLANNING

2019-2020



ACTIVE EDGES / NORTH-SOUTH LINKS

A fully connected precinct needs strong physical and visual connections between the city, the surrounding urban fabric and the Riverbank. To achieve this, more direct, generous,

visible and safer walking and cycling linkages will be created to draw people into the precinct. This will be achieved through the identification of potential new connections along North Terrace and Port and Hackney Roads and the enhancement of existing strategic links, such as that between Adelaide Oval and the Adelaide Central Market.

Capitalising on opportunities to activate the edges of the precinct, including revitalising retail corridors, attracting new restaurants and cafés and building on commercial opportunities, will also be pursued as a means of fully integrating the Riverbank with the surrounding urban fabric.

ACTION

IDENTIFY OPPORTUNITIES ALONG NORTH TERRACE TO UPGRADE PEDESTRIAN AND CYCLING LINKAGES THROUGH TO THE RIVERBANK AND IMPROVE CONNECTIVITY BACK TO THE CITY

PHASE

PLANNING / INVESTIGATION

WHEN

JULY 2016

VISION FOR ESTABLISHING A PEDESTRIAN AND CYCLING LINK CROSSING OVER MORPHETT STREET BRIDGE

PLANNING

2018-2019

INVESTIGATE A PEDESTRIAN LINK FROM THE HEALTH AND BIOMEDICAL PRECINCT TO THE WATER'S EDGE

PLANNING / INVESTIGATION

2018-2019

IDENTIFY OPPORTUNITIES TO LINK FUTURE DEVELOPMENT ALONG PORT ROAD WITH THE RIVERBANK

PLANNING / INVESTIGATION

2019-2020

WAYFINDING

The need to create more direct, safe, and visible walking and cycling connections across and throughout the precinct will be addressed through the provision of clear, consistent and meaningful signage and navigation markers across the Riverbank.

This will be achieved by:

- Working with Adelaide City Council to fast-track the implementation of new directional signage developed in accordance with its Wayfinding Strategy
- Developing and installing interpretive signage to highlight the rich indigenous and early European

history of the precinct as well as major architectural landmarks

- Incorporating lighting as a means of navigating and illuminating the Riverbank in the evenings.



ACTION

NEW WAYFINDING SIGNAGE WITHIN THE CORE ENTERTAINMENT PRECINCT

PHASE

DELIVERY

WHEN

DECEMBER 2015

EXPAND THE FREE WI-FI NETWORK COVERAGE THROUGHOUT THE RIVERBANK PRECINCT

DELIVERY

APRIL 2016

EXTEND WAYFINDING SIGNAGE THROUGHOUT THE RIVERBANK PRECINCT

INVESTIGATION / DELIVERY

APRIL 2016

INVESTIGATE OPPORTUNITIES TO INSTALL 'SMART' WAYFINDING THROUGHOUT THE PRECINCT BY INCORPORATING WI-FI ENABLED INFORMATION POINTS IN SIGNAGE

PLANNING / INVESTIGATION

2017-2018

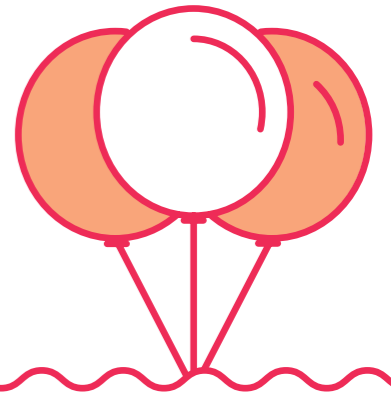
ATTRACTIVE PUBLIC SPACES



RIVERBANK PROMENADE

The construction of Stage 2 of the Adelaide Convention Centre extension has created an opportunity to establish a vibrant food and beverage boulevard along the Riverbank Promenade. Ensuring these venues and the building itself take full advantage

of this spectacular location by embracing the riverfront and integrating with the surrounding public realm will help to establish the promenade as one of Adelaide's premier dining precincts. It will also act as a catalyst for similar development further along the promenade and throughout the Riverbank.



ACTION

INTEGRATION OF COMMERCIAL OPPORTUNITIES WITHIN THE ADELAIDE CONVENTION CENTRE WITH THE RIVERBANK PROMENADE

PHASE

PLANNING

WHEN

2016-2017

SUPPORT THE EXPANSION OF ACTIVATION ALONG THE LENGTH OF THE RIVERBANK PROMENADE WITH CAFES, RESTAURANTS AND OTHER RETAIL OUTLETS

INVESTIGATION / DELIVERY

2017-2018

SPACES FOR PEOPLE

Public spaces around and between new developments will be finished to a high quality and standard to create unique visitors' experiences

throughout the Riverbank. The Authority will provide feedback on development proposals to ensure these high profile public spaces are designed and developed in line with the design principles for the Riverbank. This will be supported through the

establishment of design guidelines in consultation with Adelaide City Council and Precinct Partners.

Elements of the landscape design and materials will incorporate, but not be limited to, paving, lighting, public seating and shelter.

ACTION

SUPPORT THE INTEGRATION OF THE SAMHRI / new RAH PLAZA WITH THE HEALTH AND BIOMEDICAL PRECINCT AND NORTH TERRACE

PHASE

PLANNING

WHEN

MARCH 2016

ESTABLISH AN URBAN DESIGN GUIDELINE FOR CONNECTIONS AND PUBLIC REALM UPGRADES IN THE PRECINCT, IDENTIFYING PREFERRED MATERIALS, LANDSCAPING AND ELEMENTS TO BE IMPLEMENTED

DELIVERY

JUNE 2016

SUPPORT THE DELIVERY AND INTEGRATION OF THE URBAN PARK BETWEEN THE ADELAIDE UNIVERSITY AND UNIVERSITY OF SOUTH AUSTRALIA BUILDINGS WITH THE HEALTH AND BIOMEDICAL PRECINCT AND NORTH TERRACE

PLANNING

AUGUST 2015

DELIVERY

2017-2018

NEW LIFE FOR OLD BUILDINGS

A review of all buildings – iconic, heritage, underutilised, vacant,

and derelict – across the Riverbank will be conducted to determine opportunities for possible redevelopment opportunities, including restaurants, cafes and art galleries.



ACTION

CONDUCT AN AUDIT OF BUILDINGS ACROSS THE RIVERBANK PRECINCT TO IDENTIFY OPPORTUNITIES FOR FUTURE DEVELOPMENT

PHASE

INVESTIGATION

WHEN

2018-2019

NOTE: For information on the Adelaide Festival Plaza see page 23

KEY DESTINATIONS



HEALTH AND BIOMEDICAL PRECINCT

With its world-class research facilities, core public infrastructure and architecturally innovative design, the Health and Biomedical Precinct will attract thousands of workers, patients, researchers and visitors to the space every day. The public spaces and places linking these

buildings will be of a high standard, featuring public furniture and lighting, unique art installations and natural landscaping as well as restaurants and cafes to provide opportunities for relaxing and gathering.

Safe and accessible linkages between the Health and Biomedical Precinct and the CBD over North Terrace as well as other areas within the Riverbank, including the river front where a significant upgrade of the underutilised open space behind the SAHMRI and

new Royal Adelaide Hospital will see the creation of a new recreation zone, will be established.

The area between the river and the railway lines to the west of Morphett Street Bridge will be redeveloped to support the attraction of interstate and overseas visitors through high quality accommodation, commercial and tourism options. Investigations will also be conducted to ensure development opportunities within in the precinct are maximised.

ACTION

IDENTIFY FUTURE DEVELOPMENT OPPORTUNITIES IN THE HEALTH AND BIOMEDICAL PRECINCT, INCLUDING THE OLD ADELAIDE GAOL, FORMER POLICE BARRACKS AND THE AREA WEST OF MORPHETT STREET BRIDGE

PHASE

INVESTIGATION / DELIVERY

WHEN

MARCH 2016

DEVELOP A VISION FOR THE PUBLIC SPACE ALONG THE RIVER TORRENS BEHIND THE SAMHRI, NEW ROYAL ADELAIDE HOSPITAL AND UNIVERSITY BUILDINGS, INCLUDING A STAGED APPROACH TO DELIVERY

PLANNING / INVESTIGATION

MARCH 2017

STAGE 1 OF THE HEALTH AND BIOMEDICAL PRECINCT PUBLIC SPACE

DELIVERY

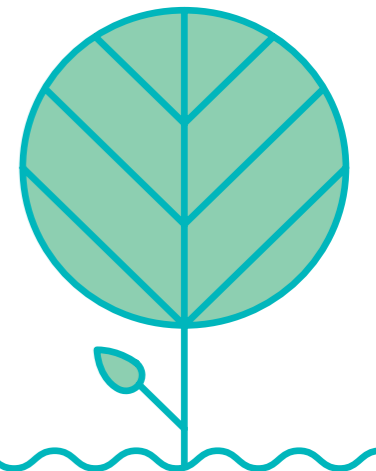
2018-2019

BONYTHON PARK REVITALISATION

A revitalised Bonython Park will utilise the topography and natural landscape of the site to reinforce its riverine character by opening up access to the water, improving water and biodiversity and establishing wetlands. The park will be alive with people, families and health enthusiasts enjoying a range of

activities from cafes to play equipment to boardwalks and running and cycling tracks.

Bonython Park will also serve as a vital connection between the increased population densities proposed for the inner west, including new housing in Bowden, Thebarton and Mile End, and the CBD and act as a catalyst to revitalise development opportunities along the adjacent Port Road.



ACTION

ESTABLISH A VISION FOR THE ONGOING REVITALISATION OF BONYTHON PARK, INCLUDING A STAGED APPROACH TO THE PROJECT WORKS

PHASE

INVESTIGATION / DELIVERY

WHEN

2017-2018

STAGE 1 OF THE BONYTHON PARK REVITALISATION PROJECT

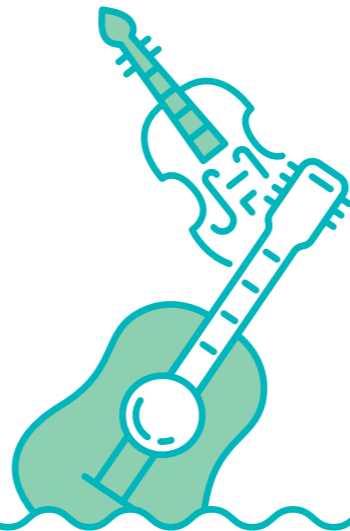
DELIVERY

2019-2020

ADELAIDE FESTIVAL PLAZA REDEVELOPMENT

The plaza area between the Adelaide Festival Centre and Parliament House will be transformed into a world-class destination at the heart of the Riverbank Precinct and Adelaide's best public space. A sweeping multi-purpose plaza that seamlessly links Elder Park and the Riverbank Footbridge to the Adelaide Railway Station and North Terrace, the new-look plaza will feature public artwork, water features and natural

plantings as well as ample seating, shelter and activation. With improved pedestrian connections between the footbridge and the railway station, a new underground car park, a premium office building along a closed-to-traffic Station Road, a variety of cafés, restaurants and retail the plaza will provide a major new focus for tourism, entertainment and cultural celebrations for all South Australians.



ACTION

FINALISE THE DESIGN FOR THE NEW FESTIVAL PLAZA PUBLIC REALM

PHASE

DELIVERY

WHEN

SEPTEMBER 2015

SUPPORT THE DELIVERY OF THE PLANS FOR THE PROPOSED EXPANSION OF THE ADELAIDE CASINO

DELIVERY

MARCH 2016

SUPPORT THE DELIVERY OF THE FESTIVAL PLAZA PUBLIC REALM

DELIVERY

MARCH 2018

MANAGE AND CURATE THE FESTIVAL PLAZA PUBLIC REALM

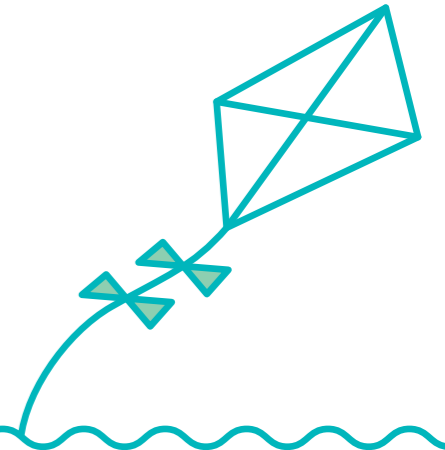
DELIVERY

2018-2020

THE ROYAL ADELAIDE SITE

The Royal Adelaide represents a once in a generation opportunity to transform Adelaide's Central Business District through the creation of an internationally acclaimed mixed-use precinct. It will become symbolic of the new Adelaide – a city that embraces and champions the development of

dynamic precincts that stimulate social and economic activity in the city. It is envisaged the site will offer substantial employment opportunities, a residential community, a range of educational facilities, local and regional retail and entertainment as well as specialist cultural facilities. Visitors, workers and residents will enjoy the open landscaped spaces, public artwork and new streets, laneways and plazas that enhance the redeveloped site.



ACTION

FACILITATE THE COMPLETION OF THE EXPRESSION OF INTEREST PROCESS FOR THE REDEVELOPMENT OF THE ROYAL ADELAIDE SITE

PHASE

DELIVERY

WHEN

SEPTEMBER 2015

OVERSEE THE APPOINTMENT OF THE DEVELOPER/CONSORTIA TO COMPLETE THE MASTER PLAN FOR THE REDEVELOPMENT OF THE ROYAL ADELAIDE SITE

DELIVERY

DECEMBER 2015

FACILITATE THE ESTABLISHMENT OF A SEAMLESS INTERFACE BETWEEN THE ROYAL ADELAIDE SITE AND THE NEIGHBOURING BOTANIC GARDENS AND UNIVERSITY PRECINCT

PLANNING / INVESTIGATION

2016-2017

SUPPORT THE IMPLEMENTATION OF REDEVELOPMENT PROPOSALS

DELIVERY

2016-2017

ACTIVELY PURSUE OPPORTUNITIES FOR COMMERCIAL PARTNERSHIPS WITH LEADING NATIONAL AND GLOBAL MEDICAL, EDUCATIONAL AND RESEARCH INSTITUTIONS.

DELIVERY

2016-2017



INDICATIVE IMAGE



ACTIVATION/PLACE MAKING



EVENTS CALENDAR

The Riverbank will continue to be the place where South Australians will gather to take part in new and established events and activities programmed to make the best use of the space. These events will be supported by improved facilities and equipment, where visitors can rest, shelter, learn, play, have a coffee,

observe and eat. Visitors will be able to enjoy everything from multi-location pop ups, such as bars, sports, games, seasonal events, temporary furniture, children's activities and food markets based on South Australian produce. Even during periods of construction, including the redevelopment of the Festival Plaza and the completion of the Adelaide Convention Centre expansion, people will be attracted to the Riverbank for fun and entertainment.



ACTION

ESTABLISH A PRECINCT-WIDE EVENTS CALENDAR IN PARTNERSHIP WITH THE PRECINCT PARTNERS, GOVERNMENT AGENCIES AND ADELAIDE CITY COUNCIL TO CONSOLIDATE AND PROMOTE THE ACTIVITIES THROUGHOUT THE RIVERBANK

PHASE

INVESTIGATION / DELIVERY

WHEN

DECEMBER 2015

DEVELOP ONLINE AND TRADITIONAL MEDIA SUPPORT FOR ACTIVITIES IN THE PRECINCT

DELIVERY

DECEMBER 2015

ESTABLISH AN ACTIVATION STRATEGY FOR THE CORE ENTERTAINMENT PRECINCT DURING THE CONSTRUCTION OF THE NEW FESTIVAL PLAZA

INVESTIGATION / DELIVERY

JANUARY 2016

ESTABLISH AN ACTIVATION PLAN TO SUPPORT THE DECOMMISSIONING OF THE ROYAL ADELAIDE SITE

DELIVERY

2016-2017

OVERSEE THE IMPLEMENTATION OF STAGE 1 OF THE ACTIVATION PLAN FOR THE ROYAL ADELAIDE SITE

DELIVERY

2017-2018

NIGHT TIME ACTIVATION

The Riverbank will be alive with crowds of people at all times, including during the evening periods through the creation of safe and

attractive environments offering a diverse range of activities for locals and visitors. Improved lighting along pathways will better connect the Riverbank, by providing users with a clear understanding of how to navigate the precinct and highlighting points of interest along the way.

Public art lighting that utilises the water, illuminates infrastructure and enhances the natural landscape will attract a wide range of visitors, whose enjoyment of the Riverbank at night will be augmented by the diversity of things to see and do.

ACTION

DEVELOP A PRECINCT-WIDE NIGHT TIME STRATEGY WITH SUGGESTED PROGRAM DELIVERABLES AND TIMEFRAMES

PHASE

DELIVERY

WHEN

APRIL 2016

IMPLEMENT A PILOT PROJECT IN THE CORE ENTERTAINMENT PRECINCT

DELIVERY

MAY 2016



Courtesy of Adelaide City Council / Archie Five Photography

PUBLIC ART FRAMEWORK

The Riverbank Precinct will become the city's most significant open air art gallery. Already the site of many public works and installations of cultural and historical significance, the addition of new innovative, interactive and evolving creations throughout the

Riverbank, including sculpture walks, murals and artistic lighting, will ensure they become a permanent fixture on the Adelaide "must see list". Celebrating South Australia's rich heritage, the works will create opportunities to tell broader stories about the history and culture of the Riverbank. The installations will be both coordinated and curated to ensure an authentic artistic experience.



ACTION	PHASE	WHEN
ESTABLISH A PRECINCT-WIDE PUBLIC ART FRAMEWORK	DELIVERY	JANUARY 2016
IMPLEMENT A PILOT PROGRAM IN THE CORE ENTERTAINMENT PRECINCT	DELIVERY	JANUARY 2016
ESTABLISH A PUBLIC ART STRATEGY FOR THE FESTIVAL PLAZA	DELIVERY	MAY 2016
IMPLEMENT A PILOT PROGRAM IN THE HEALTH AND BIOMEDICAL PRECINCT	DELIVERY	2016-2017
IMPLEMENT A PILOT PROGRAM IN THE EDUCATION AND CULTURAL PRECINCT	DELIVERY	2016-2017

EXPANDED RETAIL ACTIVITY

Retail activation will be a major component of the Riverbank with more people being drawn into and through the precinct during the day and into the evenings by a wide variety of opportunities. The redeveloped Festival Plaza and Riverbank Promenade will be supplemented by pockets of activation in other key locations throughout the space.

Pop-up and temporary retail functions will regularly shift to different and unexpected locations throughout the Riverbank to add a layer of uniqueness and surprise to the experience.

The Riverbank Precinct will become Adelaide's premier food and wine destination, with new food and beverage opportunities made available in previously underutilised waterfront spaces and smaller scale destinations. This includes pop-up coffee shops and cafés, located in strategic and unexpected locations across all three precincts.



ACTION	PHASE	WHEN
DEVELOP A RETAIL ACTIVITY PLAN FOR THE PRECINCT TO IDENTIFY OPPORTUNITIES AND LOCATIONS FOR POTENTIAL NEW FOOD AND BEVERAGE AND RETAIL DESTINATIONS	DELIVERY	FEBRUARY 2016
IDENTIFY OPPORTUNITIES FOR NEW FOOD AND BEVERAGE DESTINATIONS THROUGHOUT THE PRECINCT	PLANNING / INVESTIGATION	2016-2017
FACILITATE THE DELIVERY OF FACILITIES BY THE PRIVATE SECTOR	DELIVERY	2016-2017
ESTABLISH GUIDELINES FOR THE DELIVERY OF THE RETAIL TENANCY MIX FOR THE FESTIVAL PLAZA, INCLUDING ADELAIDE FESTIVAL CENTRE, CASINO EXPANSION AND RIVERBANK PROMENADE	DELIVERY	2016-2017
ESTABLISH A RETAIL STRATEGY FOR THE ADELAIDE RAILWAY STATION	INVESTIGATION / DELIVERY	2016-2017

WATER/RIVER ACTIVATION

People will come to the Riverbank to spend time on and around the water. Rowers and paddle boats will be joined in the river by kayaks and wooden boats, watched by families sitting on the water's edge enjoying lunch in specially designated picnic areas while

their children play on newly installed equipment nearby. Elsewhere, people amble along boardwalks built over newly established wetlands designed to help improve the overall water quality of the River Torrens. At night, the surface of the river will come alive through the installation of light and movement, which can be enjoyed from strategic vantage points along its banks.



ACTION	PHASE	WHEN
FACILITATE THE INSTALLATION OF A WATER AND LIGHT ATTRACTIONS IN THE CORE ENTERTAINMENT PRECINCT	PLANNING / INVESTIGATION	DECEMBER 2015
	DELIVERY	JUNE 2016
ESTABLISH A WATER / RIVER ACTIVATION STRATEGY	DELIVERY	SEPTEMBER 2016

FURTHER INFORMATION

www.riverbank.sa.gov.au

8207 1300

info.renewalsa@sa.gov.au

Level 9, Riverside Centre

North Terrace, Adelaide

South Australia 5000

GPO Box 698

Adelaide 5001

Published August 2015

